

How to Increase the Java Applet Memory Limit

IMPORTANT UPDATE: Sun's Java 6 Update 10 (and later) includes the ability to set the maximum java applet memory from an <applet> param. [Sun reference documentation](#). The param name is `java_arguments` and the value looks like `-Xmx300m`. Please note that this solution requires (1) the client computer to be running Java 6 Update 10 (or later), and (2) the HTML programmer to use this new applet param.

Add the line `<param name="java_arguments" value="-Xmx300m">` to the applet parameter lists of CADViewer Pro, and CADViewer should be able to display large files.

Problem: The Java plugin in your web browser has run out of memory

Cause: The memory limit for the Java plugin is usually around 60-90 MB

Solution: Increase the Java Applet memory limit, by either:

- A) Add the line `<param name="java_arguments" value="-Xmx300m">` to the HTML applet tags in CADViewer - or
- B) See steps below:

1. First, make sure that you are running the most recent version of Sun's Java (1.6), which has memory improvements (and security updates) over prior Java versions.
2. Click on 'Start'



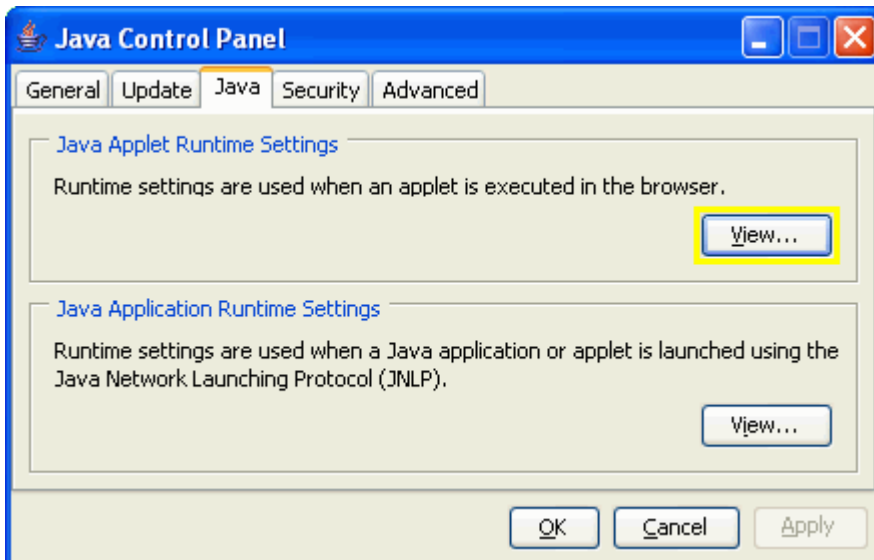
3. Click on 'Control Panel'



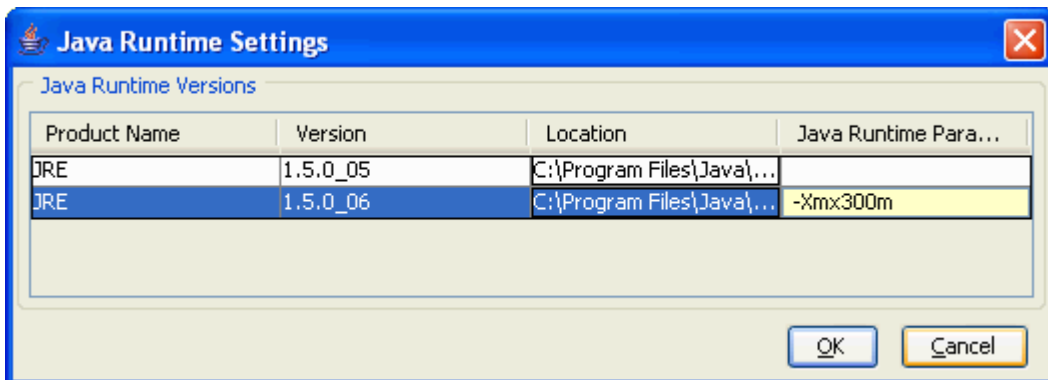
4. Double click on the 'Java Plug-in' icon (which may be under 'Other Control Panel Options').



5. Select the 'Java' tab and click on the 'View...' button, under the 'Java Applet Runtime Settings' section.



- Find the most recent 'Version' Java runtime line (below: 1.5.0_06 is more recent than 1.5.0_05) and double click on the 'Java Runtime Parameters' box and add "-Xmx300m" (set Java maximum heap size to 300 MB) as you see below. For some unknown reason, some computers with large amounts of installed memory are limited to how much memory they can assign to their Java VM. If you experience problems, just reduce the "300" to some smaller number (like 250, 200, 150, etc)



- Click 'OK' to exit all dialogs. Close the control panel window.
- Important: Exit ALL web browser windows.